

MLIRD-Status (11/14/2023)

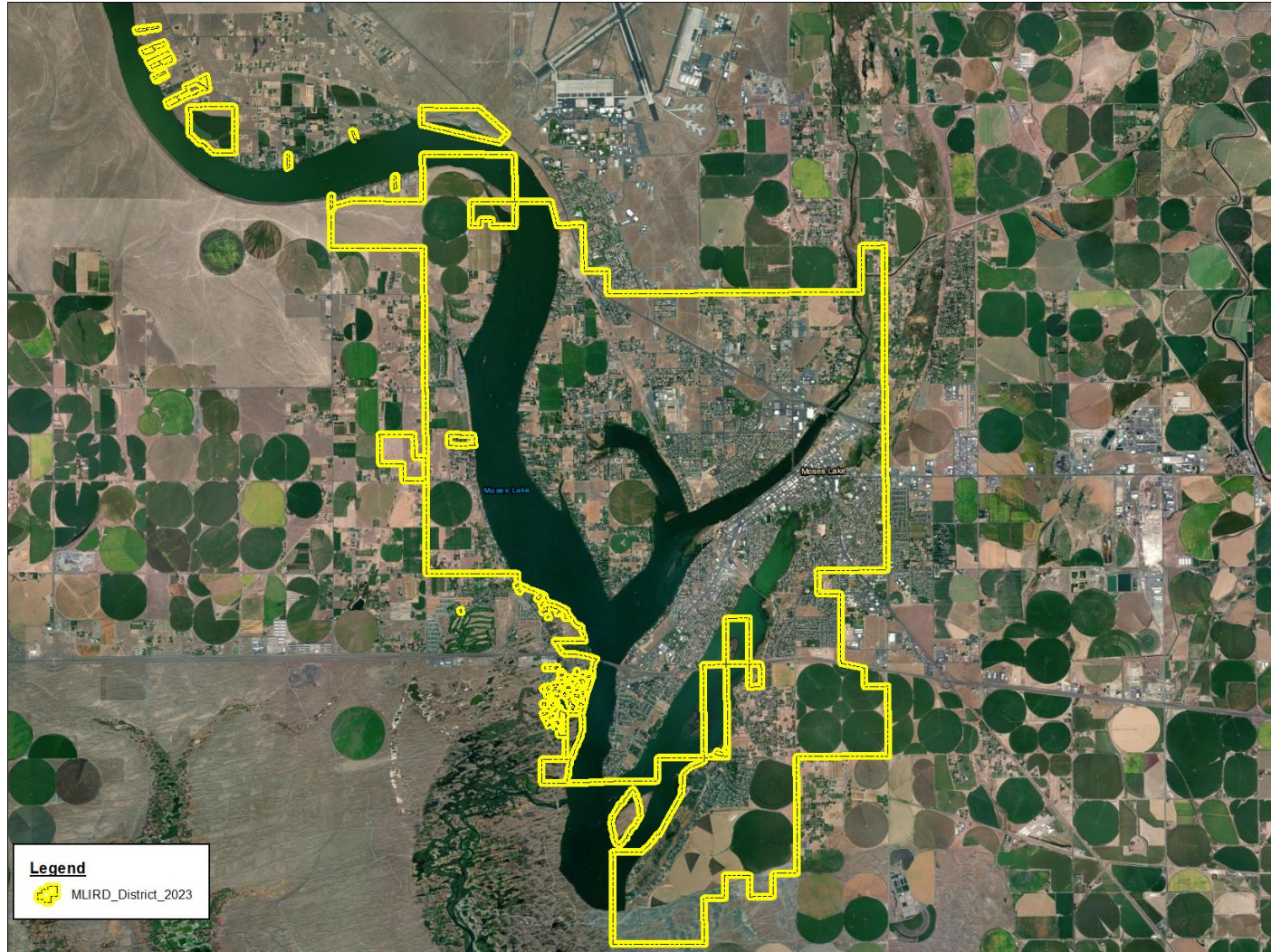


**MOSES LAKE IRRIGATION AND
REHABILITATION DISTRICT**


**PO Box 98 | 932 E Wheeler Rd |
Moses Lake, Washington 98837 |
509-765-8716**

<https://www.mlird.org/>

MLIRD Map Overview



Legend

 MLIRD_District_2023

Disclaimer: This data should not be construed as legal advice or legal opinion on any specific facts or circumstances. The contents are intended for general information purposes only, and you are urged to consult your own lawyer concerning your own situation and any specific questions you may have. Infrastructure records, drawings, and other documents have been gathered over many decades, using differing standards for quality control, documentation and verification. All of the data provided represents current information in a readily available format. While the data is generally believed to be accurate, occasionally it proves to be incorrect; thus its accuracy is not warranted. Prior to making any property purchases or investments based in full or in part upon the material provided, it is specifically advised that you independently field verify the information contained in county records.

MLIRD-Status (11/14/2023)



**MOSES LAKE IRRIGATION AND
REHABILITATION DISTRICT**

PO Box 98 | 932 E Wheeler Rd |
Moses Lake, Washington 98837 |
509-765-8716

<https://www.mlird.org/>

MLIRD operates under:

- **RCW 87.03 irrigation**
- **RCW 87.84 rehab**

Acreage Confidence: 99%
Residential/Commercial Confidence: 99%
331 Parcels Exempt

Agenda:

MLIRD Assessment Overview:

- Review of Information
- Review Model
- Review Model Results

RCW 87.03-Irrigation

- **Model Overview and Details**

RCW 87.84-Rehabilitation

- **Model Overview and Details**

MLIRD-Status (11/14/2023)



**MOSES LAKE IRRIGATION AND
REHABILITATION DISTRICT**

PO Box 98 | 932 E Wheeler Rd |
Moses Lake, Washington 98837 |
509-765-8716

<https://www.mlird.org/>

MLIRD operates under:

- RCW 87.03 irrigation
- RCW 87.84 rehab

Acreage Confidence: 99%
Residential/Commercial Confidence: 99%
331 Parcels Exempt

99% confidence of parcels irrigable acres on lake and in district

Version 36 Assessment (53rd Iteration)

Waterfront In district

Waterfront Parcels	1,277
Waterfront Total Acres	3,522
Parcels in District	11,313
Parcels in District Acres	13,174
Parcels in District Not Waterfront	10,036
Waterfront Not in District	344

MLIRD-Status (11/14/2023)



**MOSES LAKE IRRIGATION AND
REHABILITATION DISTRICT**

PO Box 98 | 932 E Wheeler Rd |
Moses Lake, Washington 98837 |
509-765-8716

<https://www.mlird.org/>

- MLIRD operates under:**
- RCW 87.03 irrigation
 - RCW 87.84 rehab

Acreage Confidence: 99%
Residential/Commercial Confidence: 99%
331 Parcels Exempt

RCW 87.84 Rehabilitation

• Model Description

Real Example: 6 Points*

$$\left(\frac{6}{42,093} \right) \times \left(\$1,500,000 \right)$$

\$ 35.62/Point X 6 = \$ 213.72 annual

$$\left(\frac{\text{Parcel Benefits/Score/Sum}}{\text{Sum Of All Parcel Benefit Factors}} \right) \times \left(\text{Rehabilitation Budget} \right)$$

MLIRD-Status (11/14/2023)



MOSES LAKE IRRIGATION AND REHABILITATION DISTRICT

PO Box 98 | 932 E Wheeler Rd |
Moses Lake, Washington 98837 |
509-765-8716

<https://www.mlird.org/>

MLIRD operates under:

- **RCW 87.03 irrigation**
- **RCW 87.84 rehab**

Acreage Confidence: 99%
Residential/Commercial Confidence: 99%
331 Parcels Exempt

RCW 87.84 Rehabilitation

Each Parcel Receives
the Aggregate of Points

- **All Lots/Parcels in District & Waterfront**

- In District All
- Waterfront Residential
- Waterfront Commercial*
- Parks*

1 Point
4 Points
20 Points
10 Points

- Residential Acreage

- 0-1 Add+
- 1.1-2 Add+
- 2.1-3 Add+
- 3.1-5 Add+
- 5.1-10 Add+
- 10+ Add+

1 Point
2 Points
3 Points
4 Points
5 Points
6 Points

*** = no additional acreage point(s)**

MLIRD-Status (11/14/2023)



**MOSES LAKE IRRIGATION AND
REHABILITATION DISTRICT**

PO Box 98 | 932 E Wheeler Rd |
Moses Lake, Washington 98837 |
509-765-8716

<https://www.mlird.org/>

MLIRD operates under:

- **RCW 87.03 irrigation**
- **RCW 87.84 rehab**

Acreage Confidence: 99%
Residential/Commercial Confidence: 99%
331 Parcels Exempt

RCW 87.84 Rehabilitation

- **All Lots/Parcels in District & Not Waterfront**

- In District 1 Point
- All Commercial Zone 10 Points

Residential & Commercial Acreage

- | | | |
|----------|------|----------|
| • 0-1 | Add+ | 1 Point |
| • 1.1-2 | Add+ | 2 Points |
| • 2.1-3 | Add+ | 3 Points |
| • 3.1-5 | Add+ | 4 Points |
| • 5.1-10 | Add+ | 5 Points |
| • 10+ | Add+ | 6 Points |

- Farmland* 20 Points

*** = no additional acreage point(s)**

MLIRD-Status (11/14/2023)



**MOSES LAKE IRRIGATION AND
REHABILITATION DISTRICT**

PO Box 98 | 932 E Wheeler Rd |
Moses Lake, Washington 98837 |
509-765-8716

<https://www.mlird.org/>

MLIRD operates under:

- **RCW 87.03 irrigation**
- **RCW 87.84 rehab**

Acreage Confidence: 99%
Residential/Commercial Confidence: 99%
331 Parcels Exempt

99% confidence of parcels irrigable acres on lake and in district

Version 36 Assessment (53rd Iteration)

Waterfront In district

Waterfront Parcels	1,277
Waterfront Total Acres	3,522
Parcels in District	11,313
Parcels in District Acres	13,174
Parcels in District Not Waterfront	10,036
Waterfront Not in District	344

MLIRD-Status (11/14/2023)



**MOSES LAKE IRRIGATION AND
REHABILITATION DISTRICT**

PO Box 98 | 932 E Wheeler Rd |
Moses Lake, Washington 98837 |
509-765-8716

<https://www.mlird.org/>

MLIRD operates under:

- **RCW 87.03 irrigation**
- **RCW 87.84 rehab**

Acreage Confidence: 99%
Residential/Commercial Confidence: 99%
331 Parcels Exempt

RCW 87.03 Irrigation

- **Waterfront & Known Water Users**

- Size of parcels:

- Acreage

- 0-1 (\$200)
- 1.1-2 (\$300)
- 2.1-3 (\$400)
- 3.1-5 (\$500)
- 5.1-10 (\$600)
- 10+ (\$700)

- Using Water: Farmland, Developed - \$30.00 per acre
- Golf Course - \$40.00 per acre
- **Undeveloped Acreage – N/C**