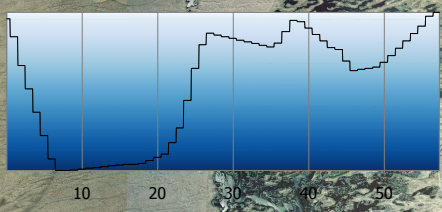
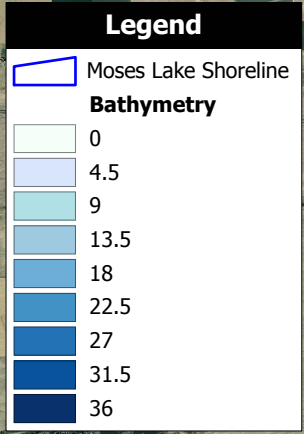


Moses Lake Irrigation and Rehabilitation District 2008 Aquatic Plant Point Intercept Survey Bathymetry Moses Lake, Washington



Data collected and compiled by Lakeland Restoration Services, LLC on behalf of the Moses Lake Irrigation and Rehabilitation District



Universal Transverse Mercator - Zone 11 (N)
North American 1983 (mean for CONUS)
Wednesday, April 29, 2009

