

Rocky Ford Creek, Phos= 172 µg/L, Nitr= 1,480 µg/L; TS-14

TS-12

TS-11

TS-2

TS-1

### Lake and Reservoir Management 1996, Nurnberg

Total Phosphorus:

- 50 µg/L = Hypereutrophic;
- 30 µg/L = Eutrophic;
- 10 µg/L = Mesotrophic;
- < 10 µg/L = Oligotrophic;

Nitrogen: NTE 10,000 µg/L for drinking water

### May 30, 2019 Water Testing Results

Rocky Coulee      µg/L      µg/L  
TS-01 -> Phos= 06    Nitr= <10

Crab Creek  
TS-02 -> Phos= 57    Nitr= 1,670

Parker Horn  
TS-03 -> Phos= 88    Nitr= 220  
TS-04 -> Phos= 15    Nitr= 102  
TS-05 -> Phos= 16    Nitr= 77

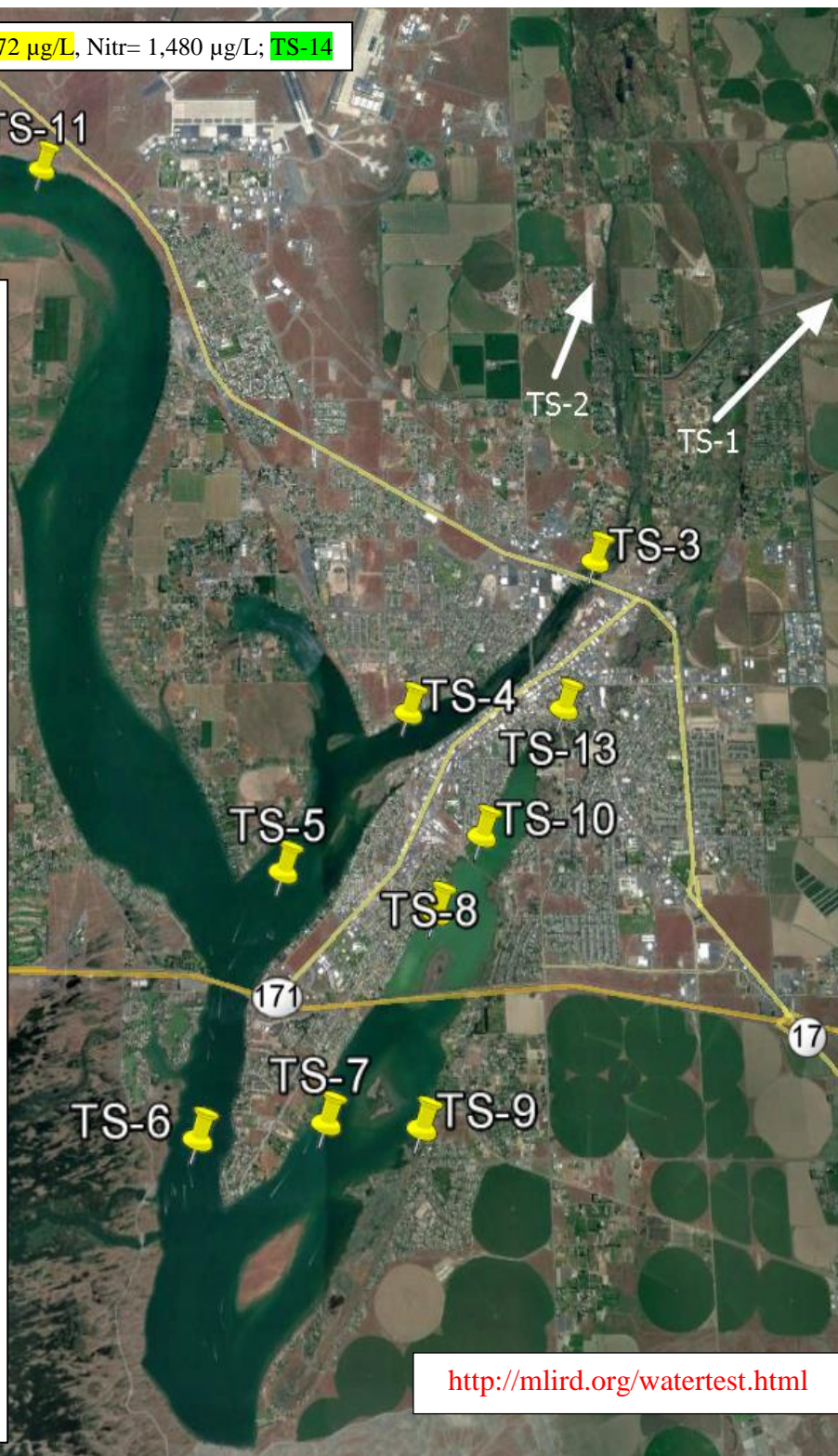
Dam Outlet Area  
TS-06 -> Phos= 14    Nitr= 104

Pelican Horn - Montlake  
TS-13 -> Phos= 86    Nitr= 1,240  
TS-10 -> Phos= 37    Nitr= 30  
TS-08 -> Phos= 34    Nitr= <10

Pelican Horn - South  
TS-07 -> Phos= 14    Nitr= 112  
TS-09b->Phos= 78    **Nitr= 16,600**

North End  
TS-12 -> Phos= 72    Nitr= 669  
TS-11 -> Phos= 32    Nitr= 213  
TS-14 -> **Phos= 172**    Nitr= 1,480

RCWW Flowing 1,150 CFS



<http://mlird.org/watertest.html>