

Rocky Ford Creek, Phos= 124 µg/L, Nitr= 1,620 µg/L; TS-14

TS-12

TS-11

TS-2

TS-1

### Lake and Reservoir Management 1996, Nurnberg

Total Phosphorus:

- 50 µg/L = Hypereutrophic;
- 30 µg/L = Eutrophic;
- 10 µg/L = Mesotrophic;
- < 10 µg/L = Oligotrophic;

Nitrogen: NTE 10,000 µg/L for drinking water

### July 09, 2019 Water Testing Results

Rocky Coulee      µg/L      µg/L  
TS-01 -> Phos= --      Nitr= --

Crab Creek  
TS-02 -> Phos= 54      Nitr= 1,800

Parker Horn  
TS-03 -> Phos= 43      Nitr= 1,500  
TS-04 -> Phos= 78      Nitr= 261  
TS-05 -> Phos= 41      Nitr= 20

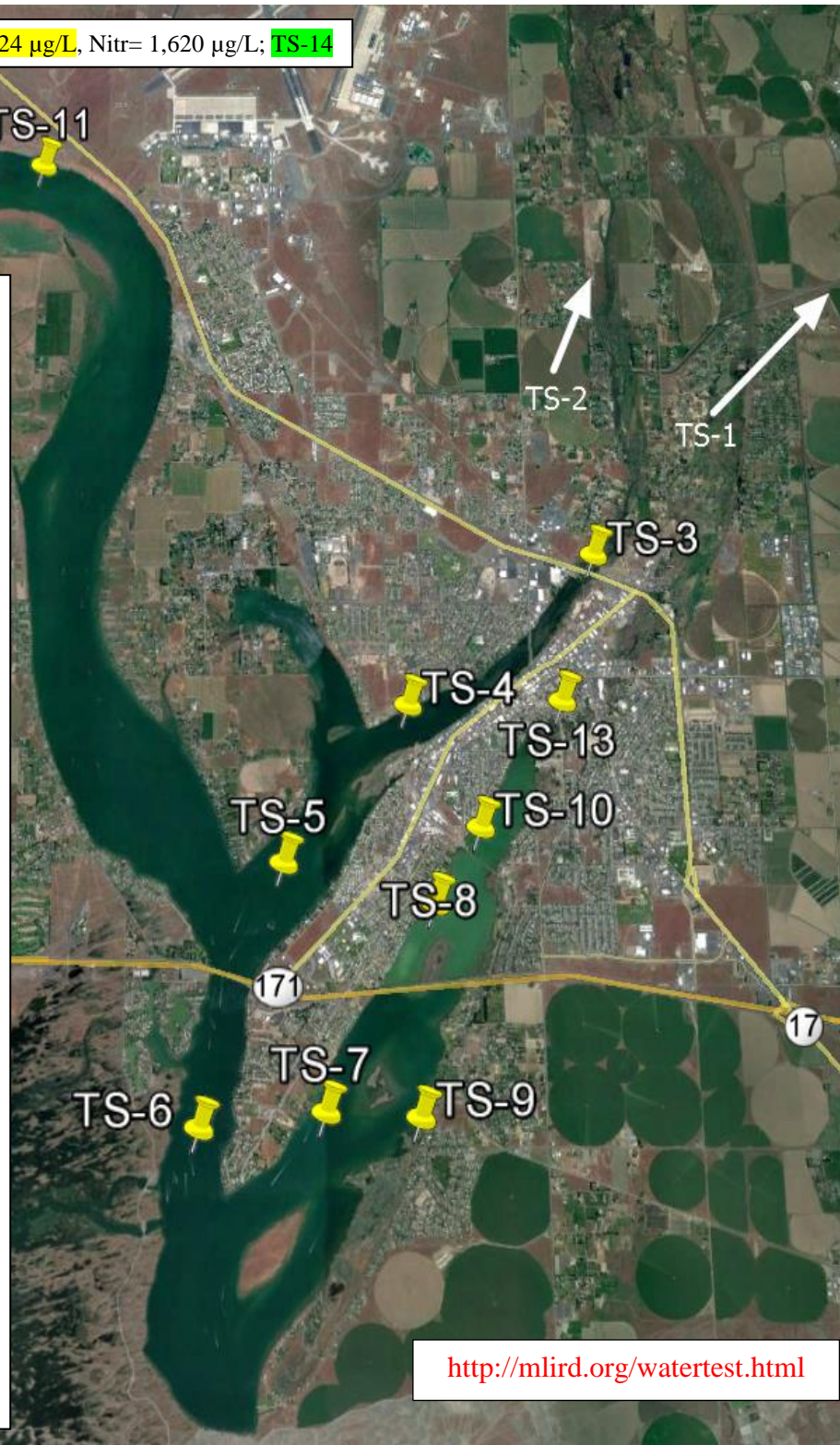
Dam Outlet Area  
TS-06 -> Phos= 27      Nitr= <10

Pelican Horn - Montlake  
TS-13 -> Phos= 43      Nitr= 1,780  
TS-10 -> Phos= 37      Nitr= 247  
TS-08 -> Phos= 63      Nitr= <10

Pelican Horn - South  
TS-07 -> Phos= 21      Nitr= <10  
TS-09b-> Phos= 80      Nitr= 11,000

North End  
TS-12 -> Phos= 135      Nitr= 102  
TS-11 -> Phos= 139      Nitr= <10  
TS-14 -> Phos= 124      Nitr= 1,620

RCWW Flowing 0 CFS



<http://mlird.org/watertest.html>