

MLIRD-Status (9/12)

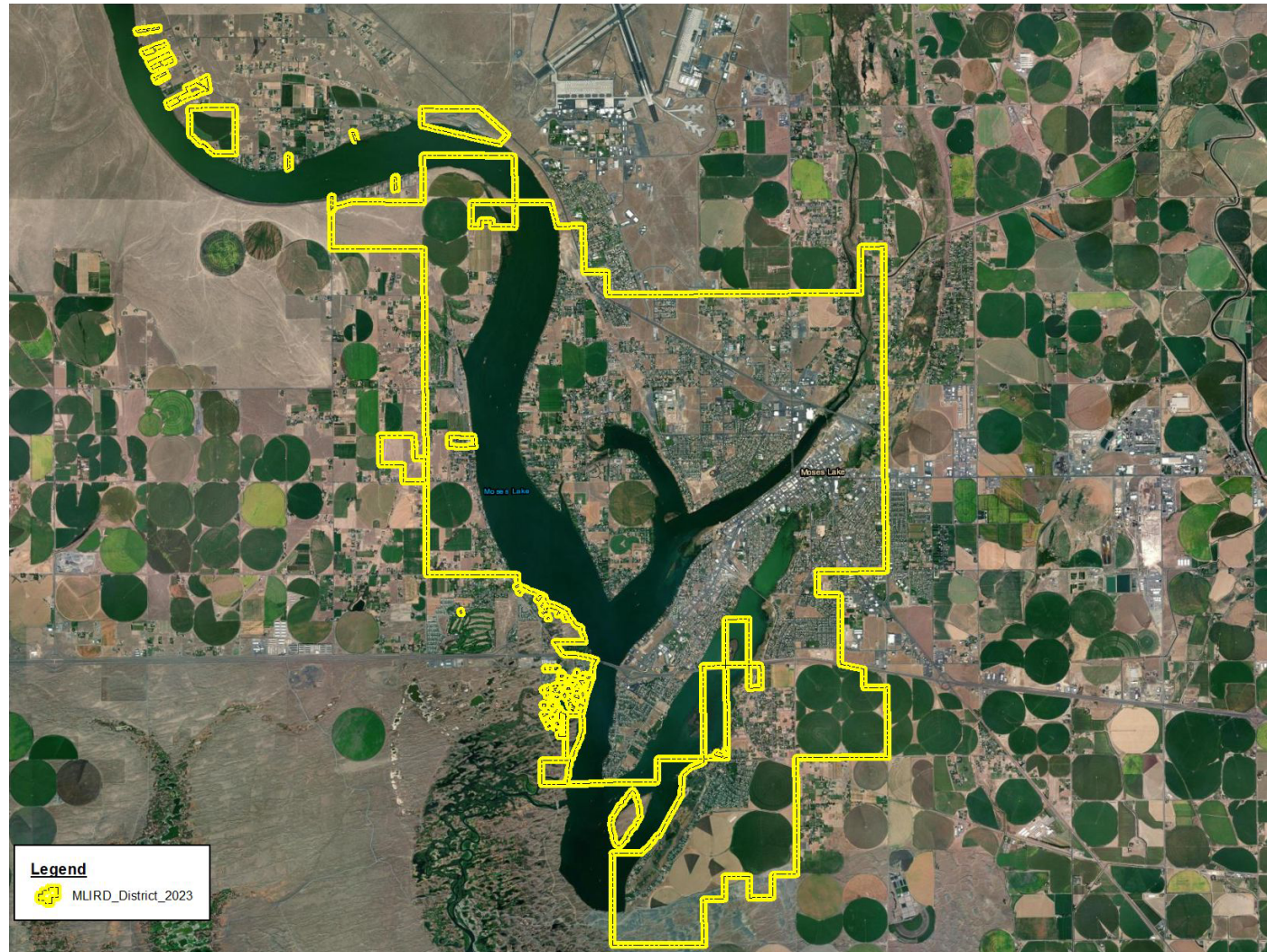


**MOSES LAKE IRRIGATION AND
REHABILITATION DISTRICT**

PO Box 98 | 932 E Wheeler Rd |
Moses Lake, Washington 98837 |
509-765-8716

<https://www.mlird.org/>

MLIRD Map Overview



Legend

 MLIRD_District_2023

Disclaimer: This data should not be construed as legal advice or legal opinion on any specific facts or circumstances. The contents are intended for general information purposes only, and you are urged to consult your own lawyer concerning your own situation and any specific questions you may have. Infrastructure records, drawings, and other documents have been gathered over many decades, using differing standards for quality control, documentation and verification. All of the data provided represents current information in a readily available format. While the data is generally believed to be accurate, occasionally it proves to be incorrect; thus its accuracy is not warranted. Prior to making any property purchases or investments based in full or in part upon the material provided, it is specifically advised that you independently field verify the information contained in county records.

MLIRD-Status (9/12)

How did we get here:

Assessment Analysis

What references did we use:

20+ irrigation and rehabilitation districts

Types of examples of assessments and irrigation & rehabilitation districts:

All over the USA



**MOSES LAKE IRRIGATION AND
REHABILITATION DISTRICT**

PO Box 98 | 932 E Wheeler Rd |
Moses Lake, Washington 98837 |
509-765-8716

<https://www.mlird.org/>

MLIRD operates under:

- **RCW 87.03 irrigation**
- **RCW 87.84 rehab**

Acreage Confidence: 99%

Residential/Commercial Confidence: 95%

331 Parcels Exempt

Disclaimer: This data should not be construed as legal advice or legal opinion on any specific facts or circumstances. The contents are intended for general information purposes only, and you are urged to consult your own lawyer concerning your own situation and any specific questions you may have. Infrastructure records, drawings, and other documents have been gathered over many decades, using differing standards for quality control, documentation and verification. All of the data provided represents current information in a readily available format. While the data is generally believed to be accurate, occasionally it proves to be incorrect; thus its accuracy is not warranted. Prior to making any property purchases or investments based in full or in part upon the material provided, it is specifically advised that you independently field verify the information contained in county records.

MLIRD-Status (9/12)



**MOSES LAKE IRRIGATION AND
REHABILITATION DISTRICT**

PO Box 98 | 932 E Wheeler Rd |
Moses Lake, Washington 98837 |
509-765-8716

<https://www.mlird.org/>

MLIRD operates under:

- **RCW 87.03 irrigation**
- **RCW 87.84 rehab**

Acreage Confidence: 99%
Residential/Commercial Confidence: 95%
331 Parcels Exempt

Version 11 Assessment (26th Iteration)

Waterfront In district

Waterfront Parcels	1,275
Waterfront Total Acres	3,357
Parcels in District	12,246
Parcels in District Acres	12,998
Parcels in District Not Waterfront	9,971
Waterfront Not in District Parcels	345

MLIRD-Status (9/12)



**MOSES LAKE IRRIGATION AND
REHABILITATION DISTRICT**

PO Box 98 | 932 E Wheeler Rd |
Moses Lake, Washington 98837 |
509-765-8716

<https://www.mlird.org/>

- MLIRD operates under:**
- **RCW 87.03 irrigation**
 - **RCW 87.84 rehab**

Acreage Confidence: 99%
Residential/Commercial Confidence: 95%
331 Parcels Exempt

RCW 87.84 Rehabilitation

- **Model Description**

Real Example: 13 Points*

$$\left(\frac{13}{45,479} \right) \times \left(\$1,500,000 \right)$$

\$ 428.74 annual

$$\left(\frac{\text{Parcel Benefits/Score/Sum}}{\text{Sum Of All Parcel Benefit Factors}} \right) \times \left(\text{Rehabilitation Budget} \right)$$

MLIRD-Status (9/12)



MOSES LAKE IRRIGATION AND REHABILITATION DISTRICT

PO Box 98 | 932 E Wheeler Rd |
Moses Lake, Washington 98837 |
509-765-8716

<https://www.mlird.org/>

MLIRD operates under:

- **RCW 87.03 irrigation**
- **RCW 87.84 rehab**

Acreage Confidence: 99%
Residential/Commercial Confidence: 95%
331 Parcels Exempt

Each Parcel Receives
the Aggregate of Points

RCW 87.84 Rehabilitation

- **All Lots/Parcels in District & Waterfront**

- In District All 1 Point
- Waterfront Residential 5 Points
- Waterfront Commercial* 20 Points
- Parks 10 Points

- Residential & Commercial Acreage

- 0-1 Add+ 1 Point
- 1.1-2 Add+ 2 Points
- 2.1-3 Add+ 3 Points
- 3.1-5 Add+ 4 Points
- 5.1-10 Add+ 5 Points
- 10+ Add+ 6 Points

*if waterfront commercial=no additional acreage point(s)

MLIRD-Status (9/12)



**MOSES LAKE IRRIGATION AND
REHABILITATION DISTRICT**

PO Box 98 | 932 E Wheeler Rd |
Moses Lake, Washington 98837 |
509-765-8716

<https://www.mlird.org/>

MLIRD operates under:

- **RCW 87.03 irrigation**
- **RCW 87.84 rehab**

Acreage Confidence: 99%
Residential/Commercial Confidence: 95%
331 Parcels Exempt

RCW 87.84 Rehabilitation

- **All Lots/Parcels in District & Not Waterfront**

- In District 1 Point
- **All Commercial Zone** 10 Points

Residential & Commercial Acreage

- 0-1 Add+ 1 Point
- 1.1-2 Add+ 2 Points
- 2.1-3 Add+ 3 Points
- 3.1-5 Add+ 4 Points
- 5.1-10 Add+ 5 Points
- 10+ Add+ 6 Points

- Farmland* 20 Points

*if farmland=no additional acreage point(s)

MLIRD-Status (9/12)



**MOSES LAKE IRRIGATION AND
REHABILITATION DISTRICT**

PO Box 98 | 932 E Wheeler Rd |
Moses Lake, Washington 98837 |
509-765-8716

<https://www.mlird.org/>

MLIRD operates under:

- **RCW 87.03 irrigation**
- **RCW 87.84 rehab**

Acreage Confidence: 99%
Residential/Commercial Confidence: 95%
331 Parcels Exempt

99% confidence of parcels irrigable acres on lake and in district

Version 11 Assessment (26th Iteration)

Waterfront In district

Waterfront Parcels	1,275
Waterfront Total Acres	3,357
Parcels in District	12,246
Parcels in District Acres	12,998
Parcels in District Not Waterfront	9,971
Waterfront Not in District	345

MLIRD-Status (9/12)



**MOSES LAKE IRRIGATION AND
REHABILITATION DISTRICT**

PO Box 98 | 932 E Wheeler Rd |
Moses Lake, Washington 98837 |
509-765-8716

<https://www.mlird.org/>

MLIRD operates under:

- **RCW 87.03 irrigation**
- **RCW 87.84 rehab**

Acreage Confidence: 99%
Residential/Commercial Confidence: 95%
331 Parcels Exempt

RCW 87.03 Irrigation

- **Lakefront & Known Water Users**
- Size of parcels:
 - Acreage
 - 0-1 (\$200)
 - 1.1-2 (\$300)
 - 2.1-3 (\$400)
 - 3.1-5 (\$500)
 - 5.1-10 (\$600)
 - 10+ (\$700)
- Using Water: Farmland, Developed - \$30 per acre
- Golf Course - \$40.00 per acre
- Undeveloped Acreage – N/C